



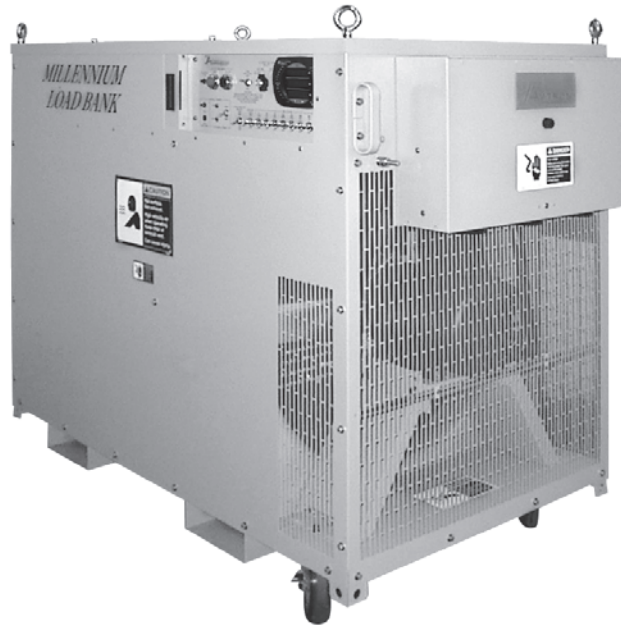
6255 HALLE DRIVE, CLEVELAND, OH, U.S.A. 44125
(1) 216-573-7600 • FAX: (1) 216-573-5953

MILLENNIUM LOAD BANK

200-400 KW

200-400 KW PORTABLE LOAD BANK

- Portable for Load Testing at Multiple Sites
- Compact Easy to Transport and Operate
- Large Load Capacity – up to 400 KW
- Rugged Aluminized Steel Enclosure with Casters
- Convenient Operator Controls with Digital Metering and Data Logging Software Included



QUALITY SYSTEM CERTIFIED TO
ISO 9001

The Avtron Millennium Load Bank is a portable, self-contained unit that simulates electrical loads. It is ideal for routine load testing of standby diesel generating systems or for factory production line testing of (UPS) Uninterruptible Power Supplies, turbines, or engine generator sets. This model provides resistive loading up to 400 KW at either 240/480, or 480 Volts AC in a convenient, and easy-to-use package.

The load bank features horizontal air discharge to provide a low profile design for easy entry into areas such as parking garages. The unit is simple to set up and operate by a single technician, saving valuable time in the field. An optional control power transformer is also available for sites where 120 VAC power is not readily available.

The new standard in digital metering includes the Avtron Advanced Digital Monitoring System (ADMS)[™]. The ADMS meter provides faceplate digital display of Volts, Amps, Frequency, and Power measurements. The Communicator EXT[™] Data Logging Software allows Real Time Data Acquisition and trending of all meter parameters from your Laptop PC or PDA. An Infrared/USB interface cable is included for "Plug and Play" convenience.

The Millennium load bank incorporates state-of-the-art design features, including a heavy gauge aluminized steel enclosure, continuously supported resistor elements on stainless steel rods, and an industrial blower.

Legendary Avtron quality combined with simple operation and maintenance provide years of trouble free service.

The Avtron Millennium Load Bank is ideal for routine testing and maintenance of AC power sources such as stand-by emergency generators and UPS systems.

Avtron's extensive line of Load Bank and Industrial Resistor Products are solid performers used throughout the world.

For total technical support or additional information, please contact Avtron at (216) 573-7600 or LBsales@avtron.com.

MILLENNIUM LOAD CAPACITY RATINGS

Total Load KW	Voltage Rating (3 Phase, 60 Hz)	Load Step Resolution KW
200	240/480 VAC	5, 10, 10, 25, 50, 100 KW
250	240/480 VAC	5, 10, 10, 25, 50, 50, 100 KW
400	240/480 VAC	5, 10, 10, 25, 50, 100, 100, 100 KW
400	480 VAC	5, 10, 10, 25, 50, 100, 100, 100 KW

MILLENNIUM LOAD BANK SPECIFICATIONS

CONSTRUCTION: A rugged aluminized steel enclosure with screened inlet and exhaust openings houses the Millennium load bank. Two fixed and two lockable swivel casters provide mobility. Lifting eyes, forklift channels, and tie-down hooks are standard.

CONTROL POWER: The Millennium load bank requires control power of 120 VAC, 1-Phase, 60 Hz (control transformer optional).

COOLING: The resistive elements are air-cooled by an integrally mounted three-phase blower (250 KW or 400 KW unit) or a single-phase blower rated 120 VAC (200 KW unit). No additional cooling period is required when load is removed.

CONTROLS: The operator control panel includes a MASTER LOAD ON-OFF switch, load step ON-OFF industrial toggle switches, BLOWER ON-OFF push buttons with a BLOWER FAILURE light, and BLOWER AND LOAD VOLTAGE selector switches (dual-voltage units only).

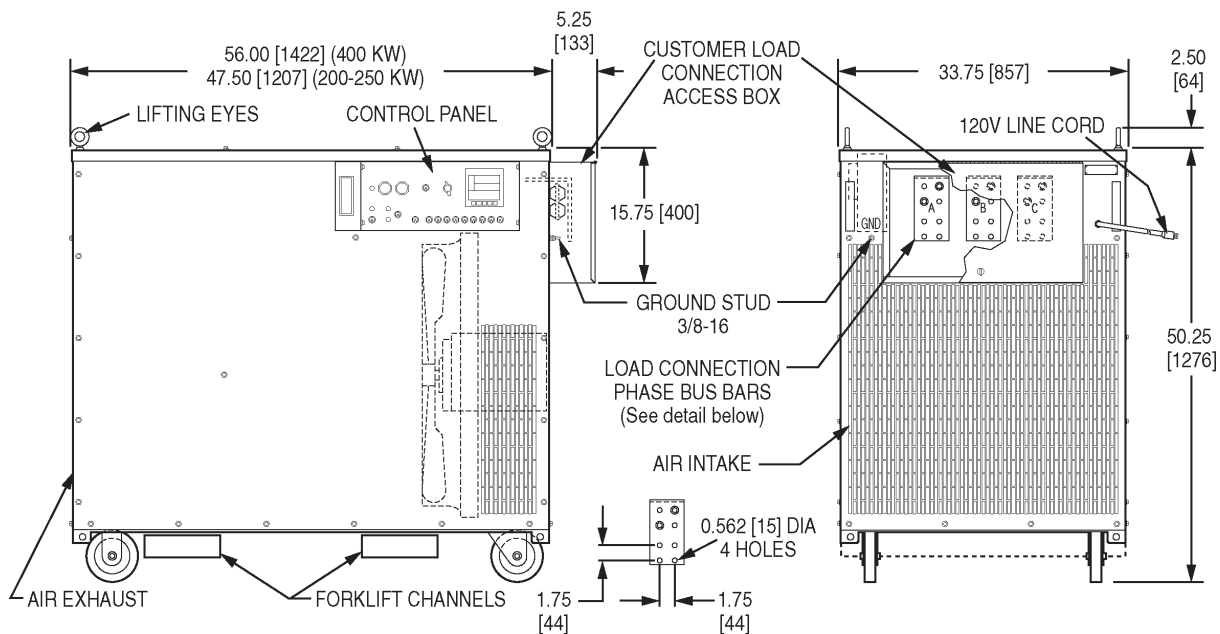
DIGITAL METERING: Advanced Digital Monitoring System (ADMS)[™] is provided for display of Volts, Amps, Frequency, and KW. ADMS[™] also includes Communicator EXT[™] Data Logging Software.

SAFETY CIRCUITS: The Millennium load bank features branch circuit fusing on all load steps. Wrong voltage protection, motor overload protection, overtemperature protection, and cooling air loss protection are also provided.

WEIGHT: Approximately 785 pounds [360 kg] (400 KW)
Approximately 650 pounds [295 kg] (200 - 250 KW)

OPTIONS:

- Control Power Transformer
- Vinyl Storage Dust Cover
- Designs for International 50/60 Hertz Voltages or Custom DC Designs are also available



ADMS[™] is a trademark of Avtron.
Communicator EXT[™] is a trademark of
Electro Industries/GaugeTech.

All dimensions are in inches [millimeters].
Specifications subject to change without notice.
Printed in U.S.A. Rev. D

